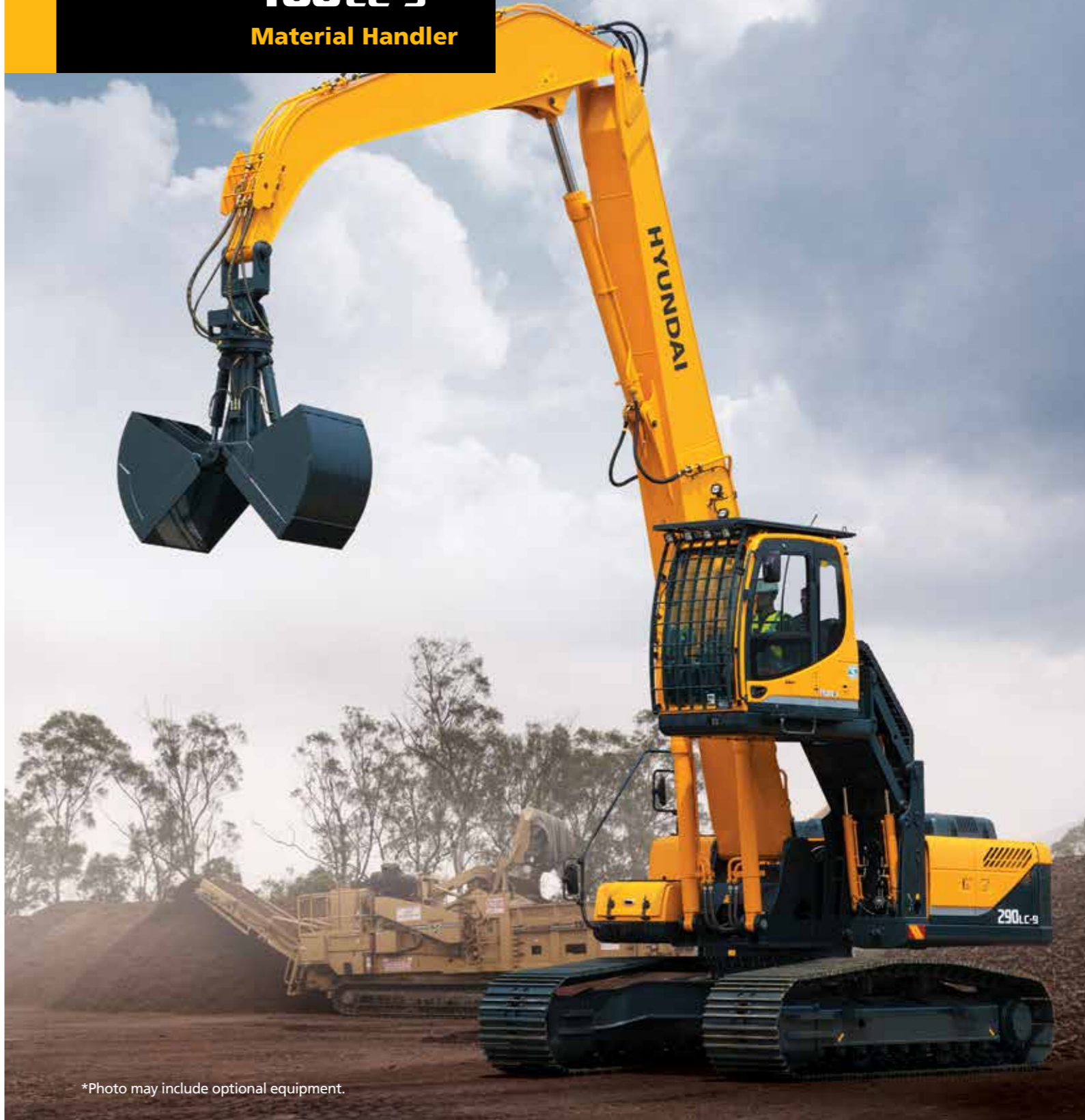


MOVING YOU FURTHER

Robex 210W-9
290LC-9
380LC-9
480LC-9
Material Handler



*Photo may include optional equipment.

PLEASE CONTACT

HYUNDAI CONSTRUCTION EQUIPMENT
Head Office (Sales office)
First tower, 55, Bundang-ro, Bundang-gu, Seongnam-si, Gyeonggi-do, Korea

Pride at Work

Purpose-built NEW excavators for the waste and recycling environment

- The hydraulic elevating cab provides the comfort of operating from a raised position ensuring an improved vision and safety.
- Larger working range and exceptional stability offer high productivity in a challenging environment.

Robex 210w-9
290LC-9
380LC-9
480LC-9
Material Handler



Specifications _ Robex 210W-9 MH

ENGINE

| | | | |
|---------------------------|--|--------------------------------|--|
| MODEL | HYUNDAI HE 6.7 | | |
| Type | Water-cooled, 4-cycle diesel, 6-cylinder in-line, Direct injection, Turbocharged, Charge air cooled, Low emission | | |
| Rated flywheel horsepower | SAE | J1995 (gross) J1349 (net) | 176 HP (131kW) at 1,900 rpm 165 HP (123kW) at 1,900 rpm |
| | DIN | 6271/1 (gross) 6271/1 (net) | 178 PS (131kW) at 1,900 rpm 167 PS (123kW) at 1,900 rpm |
| Max. torque | 81.4 kgf-m (589 lbf-ft) at 1,400 rpm | | |
| Bore X stroke | 107 x 124 mm (4.2" x 4.9") | | |
| Piston displacement | 6,700 cc (409 in ³) | | |
| Batteries | 2 x 12 V x 100 AH | | |
| Starting motor | 24 V-4.5 kW | | |
| Alternator | 24 V-90 Amp | | |

HYDRAULIC SYSTEM

| | |
|----------------------------|--|
| MAIN PUMP | |
| Type | Two variable displacement piston pumps |
| Rated flow | 2 X 228 L /min (60.2 US gpm / 50.2 UK gpm) |
| Sub-pump for pilot circuit | Gear pump |

Cross-sensing and fuel saving pump system

| | |
|------------------|--|
| HYDRAULIC MOTORS | |
| Travel | Two-speed axial pistons motor with brake valve and praking brake |
| Swing | Axial piston motor with automatic brake |

| | |
|---------------------------------|-------------------------------------|
| RELIEF VALVE SETTING | |
| Implement circuits | 350 kgf/cm ² (4,980 psi) |
| Travel | 380 kgf/cm ² (5,400 psi) |
| Power boost (boom, arm, bucket) | 380 kgf/cm ² (5,400 psi) |
| Swing circuit | 265 kgf/cm ² (3,770 psi) |
| Pilot circuit | 40 kgf/cm ² (570 psi) |
| Service valve | Installed |

| | |
|---------------------|---|
| HYDRAULIC CYLINDERS | |
| No. of cylinder | Boom : 2-120 x 1,290 mm (4.7" x 50.8") |
| bore X stroke | Arm : 1-140 x 1,478 mm (5.5" x 58.2") Cabin elevating : 2-80 X 660 mm (3.1" X 26.0") |

DRIVES & BRAKES

| | |
|------------------------------|---|
| Drive method | Fully hydrostatic type |
| Drive motor | Axial piston motor, bent axis design |
| Max. drawbar pull | 11,900 kgf (26,200 lbf) |
| Max. travel speed (high/low) | 35 km/hr (21.7 mph) / 9.3 km/hr (5.8 mph) |
| Gradeability | 31.5° (61 %) |
| Parking brake | Multi wet disc |

CONTROL

Pilot pressure operated joysticks and pedals with detachable lever provide almost effortless and fatigueless operation.

| | |
|-----------------|--|
| Pilot control | Two joysticks with one safety lever (LH): Swing and arm, (RH): Boom and grapple (ISO) |
| Engine throttle | Electric, Dial type |

AXLE & WHEEL

Full floating front axle is supported by center pin for oscillation. It can be locked by oscillation lock cylinders. Rear axle is fixed on the lower chassis.

| | |
|------------|--------------------------------|
| Tires | 10.00-20-14PR, Dual(tube type) |
| (optional) | 10.00-20, Dual(solid type) |

SWING SYSTEM

| | |
|---------------------------|--|
| Swing motor | Fixed displacement axial pistons motor |
| Swing reduction | Planetary gear reduction |
| Swing bearing lubrication | Grease-bathed |
| Swing brake(option) | Multi wet disc (pin lock type) |
| Swing speed | 10.3 rpm |

STEERING SYSTEM

Hydraulically actuated, orbitrol type steering system actuates on front wheels through the steering cylinders.

| | |
|---------------------|-------------------|
| Min. turning radius | 7,200 mm (23' 7") |
|---------------------|-------------------|

COOLANT & LUBRICANT CAPACITY

| | | | | |
|-----------------------------------|--------|----------|----------|-----|
| Re-filling | liter | US gal | UK gal | |
| Fuel tank | 310 | 81.9 | 68.2 | |
| Engine coolant | 35 | 9.2 | 7.7 | |
| Engine oil | 23.1 | 6.1 | 5.1 | |
| Swing device - gear oil | 5(6.2) | 1.3(1.6) | 1.1(1.4) | |
| Axle | Front | 14.6 | 3.9 | 3.2 |
| | Rear | 18.5 | 4.9 | 4.1 |
| Hydraulic system (including tank) | 340 | 89.8 | 74.8 | |
| Hydraulic tank | 165 | 43.6 | 36.3 | |
| Transmission | 2.5 | 0.66 | 0.55 | |

*():option

UNDERCARRIAGE

Reinforced box-section frame is all-welded, low-stress.

Outriggers are available. A pin-on design.

| | |
|-------------|---|
| 4-Outrigger | Indicated for max. operation stability when lifting. Can be mounted on the front and rear. |
|-------------|---|

OPERATING WEIGHT (APPROXIMATE)

Operating weight, including 6,500mm (21' 4") boom, 4,500mm (14' 9") arm, lubricant, coolant, full fuel tank, hydraulic tank and the standard equipment.

| | |
|--|-----------------------|
| 4-Outrigger (front and rear outrigger) | 25,700 kg (56,660 lb) |
|--|-----------------------|

Specifications _ Robex 290LC-9 MH

ENGINE

| | | | |
|---------------------------|--|--------------------------------|--|
| MODEL | HYUNDAI HE 6.7 | | |
| Type | Water-cooled, 4-cycle Diesel, 6-Cylinder in-line, Direct injection, Turbocharged, Charge air cooled, Low emission | | |
| Rated flywheel horsepower | SAE | J1995 (gross) J1349 (net) | 227 HP (169 kW)/ 1,900 rpm 197 HP (147 kW)/ 1,900 rpm |
| | DIN | 6271/1 (gross) 6271/1 (net) | 230 PS (169 kW)/ 1,900 rpm 200 PS (147 kW)/ 1,900 rpm |
| Max. torque | 96.8 kgf-m (700 lbf-ft)/ 1,400 rpm | | |
| Bore X stroke | 107 x 124 mm (4.2" x 4.9") | | |
| Piston displacement | 6,700 cc (409 in ³) | | |
| Batteries | 2 x 12 V x 160 AH | | |
| Starting motor | 24 V, 4.5 kW | | |
| Alternator | 24 V, 90 Amp | | |

HYDRAULIC SYSTEM

| | |
|----------------------------|--|
| MAIN PUMP | |
| Type | Variable displacement tandem-axis piston pumps |
| Max. flow | 2 X 252 L /min (66.6 US gpm / 55.4 UK gpm) |
| Sub-pump for pilot circuit | Gear pump |

Cross-sensing and fuel saving pump system

| | |
|------------------|--|
| HYDRAULIC MOTORS | |
| Travel | Two-speed axial pistons motor with brake valve and parking brake |
| Swing | Axial piston motor with automatic brake |

| | |
|---------------------------------|-------------------------------------|
| RELIEF VALVE SETTING | |
| Implement circuits | 350 kgf/cm ² (4,978 psi) |
| Travel | 350 kgf/cm ² (4,978 psi) |
| Power boost (boom, arm, bucket) | 380 kgf/cm ² (5,404 psi) |
| Swing circuit | 300 kgf/cm ² (4,267 psi) |
| Pilot circuit | 40 kgf/cm ² (568 psi) |
| Service valve | Installed |

| | |
|---------------------|--------------------------------------|
| HYDRAULIC CYLINDERS | |
| No. of cylinder | Boom: 2-140 X1,465 mm (5.5" X 57.7") |
| bore X stroke | Arm: 1-150 X 1,765 mm (5.9" X 69.5") |

DRIVES & BRAKES

| | |
|--------------------------------|---|
| Drive method | Fully hydrostatic type |
| Drive motor | Axial piston motor, in-shoe design |
| Reduction system | Planetary reduction gear |
| Max. drawbar pull | 27,300 kgf (60,200 lbf) |
| Max. travel speed (high / low) | 5 km/hr (3.1 mph) / 3.5 km/hr (2.2 mph) |
| Gradeability | 35° (70 %) |
| Parking brake | Multi wet disc |

CONTROL

Pilot pressure operated joysticks and pedals with detachable lever provide almost effortless and fatigueless operation.

| | |
|------------------------|--|
| Pilot control | Two joysticks with one safety lever (LH): Swing and arm, (RH): Boom and grapple (ISO) |
| Traveling and steering | Two levers with pedals |
| Engine throttle | Electric, Dial type |

SWING SYSTEM

| | |
|---------------------------|--|
| Swing motor | Fixed displacement axial pistons motor |
| Swing reduction | Planetary gear reduction |
| Swing bearing lubrication | Grease-bathed |
| Swing brake | Multi wet disc |
| Swing speed | 10.5 rpm |

COOLANT & LUBRICANT CAPACITY

| | | | |
|-----------------------------------|---------|-----------|-----------|
| Re-filling | liter | US gal | UK gal |
| Fuel tank | 500 | 132.1 | 110.0 |
| Engine coolant | 35 | 9.2 | 7.7 |
| Engine oil | 23.1 | 6.1 | 5.1 |
| Swing device - gear oil | 6 (11) | 1.6 (2.9) | 1.3 (2.4) |
| Final drive (each) - gear oil | 8 (7.8) | 2.1 (2.1) | 1.8 (1.7) |
| Hydraulic system (including tank) | 330 | 87.2 | 72.6 |
| Hydraulic tank | 190 | 50.2 | 41.8 |

*():option

UNDERCARRIAGE

The X-leg type center frame is integrally welded with reinforced box-section track frames. The undercarriage includes lubricated rollers, idlers, track adjusters with shock absorbing springs and sprockets, and a track chain with double or triple grouser shoes.

| | |
|-------------------------------------|---------------------|
| Center frame | X - leg type |
| Track frame | Pentagonal box type |
| No. of shoes on each side | 48 |
| No. of carrier rollers on each side | 2 |
| No. of track rollers on each side | 9 |
| No. of rail guards on each side | 2 |

OPERATING WEIGHT (APPROXIMATE)

Operating weight, including 7,800mm (25' 7") boom, 5,400mm (17' 9") arm, lubricant, coolant, full fuel tank, full hydraulic tank, and all standard equipments.

| | | | |
|-------|-----------------|----------------------------|--|
| Shoes | | Operating weight | Ground pressure |
| Type | Width mm (in) | kg (lb) | kgf/cm ² (psi) |
| 2 pcs | Cabin riser | 800mm (32") 900mm (36") | 32,710 (72,110) 33,090 (72,950) |
| | Cabin elevating | 800mm (32") 900mm (36") | 33,660 (74,210) 34,040 (75,050) |
| | | | 0.47 (6.68) 0.43 (6.11) 0.49 (6.97) 0.44 (6.26) |

Specifications _ Robex 380LC-9 MH

ENGINE

| | | |
|----------------------------|---|--|
| MODEL | HYUNDAI HE 8.9 | |
| Type | Water-cooled, 4-cycle Diesel, 6-Cylinder in-line, Direct injection, Turbocharged, Charger air cooled, Low emission | |
| Rated flywheel horse power | SAE | J1995 (gross) J1349 (net) |
| | DIN | 6271/1 (gross) 6271/1 (net) |
| | | 296 HP (221 kW)/ 1,850 rpm 271 HP (202 kW)/ 1,850 rpm 300 PS (221 kW)/ 1,850 rpm 275 PS (202 kW)/ 1,850 rpm |
| Max. torque | 148.0 kgf-m (1,070 lbf-ft)/ 1,400 rpm | |
| Bore X stroke | 114 x 145 mm (4.5" x 5.7") | |
| Piston displacement | 8,900 cc (540 in ³) | |
| Batteries | 2 X 12 V X 160 AH | |
| Starting motor | 24 V- 7.5 kW | |
| Alternator | 24 V- 90 Amp | |

HYDRAULIC SYSTEM

| | |
|--|---|
| MAIN PUMP | |
| Type | Variable displacement piston pump |
| Rated flow | 2 X 288 L/min (76.1 US gpm / 63.4 UK gpm) |
| Sub-pump for pilot circuit | Gear pump |
| Cross-sensing and fuel saving pump system. | |

| | |
|------------------|--|
| HYDRAULIC MOTORS | |
| Travel | Two speed axial pistons motor with brake valve and parking brake |
| Swing | Axial piston motor with automatic brake |

| | |
|---------------------------------|-------------------------------------|
| RELIEF VALVE SETTING | |
| Implement circuits | 330 kgf/cm ² (4,690 psi) |
| Travel | 330 kgf/cm ² (4,690 psi) |
| Power boost (boom, arm, bucket) | 360 kgf/cm ² (5,120 psi) |
| Swing circuit | 290 kgf/cm ² (4,125 psi) |
| Pilot circuit | 40 kgf/cm ² (569 psi) |
| Service valve | Installed |

| | | |
|---------------------------------|------|--|
| HYDRAULIC CYLINDERS | | |
| No. of cylinder (bore X stroke) | 2pcs | Boom: 2-160 X 1,500 mm (6.3" X 59.1") |
| | | Arm: 1-170 X 1,760 mm (6.7" X 69.3") |
| | 3pcs | Boom: 2-160 X 1,500 mm (6.3" X 59.1") |
| | | Mid-arm: 1-150 X 1,295 mm (5.9" X 51.0") End-arm: 1-170 X 1,760 mm (6.7" X 69.3") |

DRIVES & BRAKES

| | |
|------------------------------|---|
| Drive method | Fully hydrostatic type |
| Drive motor | Axial piston motor, in-shoe design |
| Reduction system | Planetary reduction gear |
| Max. drawbar pull | 32,000 kgf (70,550 lbf) |
| Max. travel speed (high/low) | 4.8 km/hr (3.0 mph) / 3.0 km/hr (1.9 mph) |
| Gradeability | 35° (70 %) |
| Parking brake | Multi wet disc |

CONTROL

Pilot pressure operated joysticks and pedals with detachable lever provide almost effortless and fatigueless operation.

| | |
|------------------------|---|
| Pilot control | Two joysticks with one safety lever (LH): Swing and arm, (RH): Boom and grapple (ISO) |
| Traveling and steering | Two levers with pedals |
| Engine throttle | Electric, Dial type |

SWING SYSTEM

| | |
|---------------------------|--|
| Swing motor | Fixed displacement axial pistons motor |
| Swing reduction | Planetary gear reduction |
| Swing bearing lubrication | Grease-bathed |
| Swing brake | Multi wet disc |
| Swing speed | 9.3 rpm |

COOLANT & LUBRICANT CAPACITY

| | | | |
|----------------------------------|-------|--------|--------|
| Refilling | liter | US gal | UK gal |
| Fuel tank | 550 | 145.3 | 121.0 |
| Engine coolant | 45.0 | 11.9 | 9.9 |
| Engine oil | 30 | 7.9 | 6.6 |
| Swing device-gear oil | 8.0 | 2.1 | 1.8 |
| Final drive(each)-gear oil | 5.5 | 1.5 | 1.2 |
| Hydraulic system(including tank) | 414 | 109.4 | 91.1 |
| Hydraulic tank | 210 | 55.5 | 46.2 |

UNDERCARRIAGE

The X-leg type center frame is integrally welded with reinforced box-section track frames. The undercarriage includes lubricated rollers, idlers, track adjusters with shock absorbing springs and sprockets, and a track chain with double or triple grouser shoes.

| | |
|------------------------------------|---------------------|
| Center frame | X - leg type |
| Track frame | Pentagonal box type |
| No. of shoes on each side | 51 |
| No. of carrier roller on each side | 2 |
| No. of track roller on each side | 9 |
| No. of rail guard on each side | 2 |

OPERATING WEIGHT (APPROXIMATE)

Operating weight, including 8,600mm (28' 3") boom, 6,050mm (19' 10") arm, lubricant, coolant, full fuel tank, full hydraulic tank, and all standard equipments.

| Shoes | | Operating weight | Ground pressure |
|-------|-----------------|------------------|---------------------------|
| Type | Width mm (in) | kg (lb) | kgf/cm ² (psi) |
| 2pcs | Cabin riser | 800mm (32") | 43,236 (95,320) |
| | | 900mm (36") | 43,686 (96,310) |
| 2pcs | Cabin elevating | 800mm (32") | 43.641 (96,210) |
| | | 900mm (36") | 44,091 (97,200) |
| 3pcs | Cabin riser | 800mm (32") | 42,975 (94,740) |
| | | 900mm (36") | 43,425 (95,730) |
| | Cabin elevating | 800mm (32") | 43.380 (95,640) |
| | | 900mm (36") | 43,830 (96,620) |

Specifications _ Robex 480LC-9 MH

ENGINE

| | | |
|---------------------------|--|--|
| MODEL | CUMMINS QSM11 | |
| Type | Water-cooled, 4-cycle Diesel, 6-Cylinder in-line, Direct injection, Turbocharged, Charge air cooled, Low emission | |
| Rated flywheel horsepower | SAE | J1995 (gross) J1349 (net) |
| | DIN | 6271/1 (gross) 6271/1 (net) |
| | | 357HP (266kW)/ 1,900rpm 342HP (255kW)/ 1,900rpm 362HP (266kW)/ 1,900rpm 347HP (255kW)/ 1,900rpm |
| Max. torque | 170.8kgf-m (1,235lbf-ft)/1,400rpm | |
| Bore X stroke | 125 X 147 mm (4.92" X 5.79") | |
| Piston displacement | 10,800 cc (659 in ³) | |
| Batteries | 2 X 12 V X 200 AH | |
| Starting motor | 24 V, 7.2 kW | |
| Alternator | 24 V, 90 Amp | |

HYDRAULIC SYSTEM

| | |
|---|--|
| MAIN PUMP | |
| Type | Variable displacement tandem-axis piston pumps |
| Max. flow | 2 X 370 L/min (97.7 US gpm/81.4 UK gpm) |
| Sub-pump for pilot circuit | Gear pump |
| Cross-sensing and fuel saving pump system | |

| | |
|------------------|--|
| HYDRAULIC MOTORS | |
| Travel | Two-speed axial pistons motor with brake valve and parking brake |
| Swing | Axial piston motor with automatic brake |

| | |
|---------------------------------|-------------------------------------|
| RELIEF VALVE SETTING | |
| Implement circuits | 330 kgf/cm ² (4,690 psi) |
| Travel | 360 kgf/cm ² (5,120 psi) |
| Power boost (boom, arm, bucket) | 360 kgf/cm ² (5,120 psi) |
| Swing circuit | 285 kgf/cm ² (4,050 psi) |
| Pilot circuit | 40 kgf/cm ² (570 psi) |
| Service valve | Installed |

| | | |
|---------------------------------|------|--|
| HYDRAULIC CYLINDERS | | |
| No. of cylinder (bore X stroke) | 2pcs | Boom: 2-170 X1,570 mm (6.7" X 61.8") |
| | | Arm: 1-190 X 1,820 mm (7.5" X 71.7") |
| | 3pcs | Boom: 2-170 X1,570 mm (6.7" X 61.8") |
| | | Mid-arm: 1-150 X 1,295 mm (5.9" X 51.0") End-arm: 1-190 X 1,820 mm (7.5" X 71.7") |

DRIVES & BRAKES

| | |
|--------------------------------|---|
| Drive method | Fully hydrostatic type |
| Drive motor | Axial piston motor, in-shoe design |
| Reduction system | Planetary reduction gear |
| Max. drawbar pull | 38,500 kgf (84,800 lbf) |
| Max. travel speed (high / low) | 5.0 km/hr (3.1 mph) / 3.2 km/hr (2.0 mph) |
| Gradeability | 35° (70 %) |
| Parking brake | Multi wet disc |

CONTROL

Pilot pressure operated joysticks and pedals with detachable lever provide almost effortless and fatigueless operation.

| | |
|------------------------|---|
| Pilot control | Two joysticks with one safety lever (LH): Swing and arm, (RH): Boom and grapple (ISO) |
| Traveling and steering | Two levers with pedals |
| Engine throttle | Electric, Dial type |

SWING SYSTEM

| | |
|---------------------------|--------------------------|
| Swing motor | Axial pistons motor |
| Swing reduction | Planetary gear reduction |
| Swing bearing lubrication | Grease-bathed |
| Swing brake | Multi wet disc |
| Swing speed | 9.0 rpm |

COOLANT & LUBRICANT CAPACITY

| | | | |
|-----------------------------------|----------|-----------|-----------|
| Re-filling | liter | US gal | UK gal |
| Fuel tank | 621 | 164 | 136.6 |
| Engine coolant | 45 | 11.9 | 9.9 |
| Engine oil | 37.9 | 10.0 | 8.3 |
| Swing device - gear oil | 5.0 | 1.3 | 1.1 |
| Final drive (each) - gear oil | 7.5 (12) | 2.0 (3.2) | 1.6 (2.6) |
| Hydraulic system (including tank) | 480 | 100.4 | 83.6 |
| Hydraulic tank | 260 | 68.7 | 57.2 |

*():option

UNDERCARRIAGE

The X-leg type center frame is integrally welded with reinforced box-section track frames. The undercarriage includes lubricated rollers, idlers, track adjusters with shock absorbing springs and sprockets, and a track chain with double or triple grouser shoes.

| | |
|-------------------------------------|---------------------|
| Center frame | X-leg type |
| Track frame | Pentagonal box type |
| No. of shoes on each side | 53 |
| No. of carrier rollers on each side | 2 |
| No. of track rollers on each side | 9 |
| No. of rail guards on each side | 2 |

OPERATING WEIGHT (APPROXIMATE)

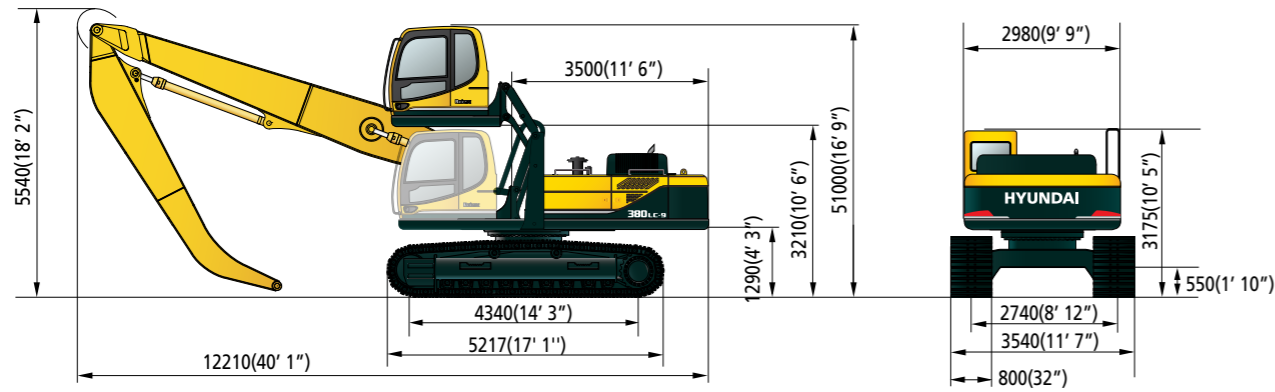
Operating weight, including 10,000mm (32' 10") boom, 7,100mm (23' 4") arm, lubricant, coolant, full fuel tank, full hydraulic tank, and all standard equipments.

| Shoes | | Operating weight | Ground pressure |
|-------|-----------------|------------------|---------------------------|
| Type | Width mm (in) | kg (lb) | kgf/cm ² (psi) |
| 2pcs | Cabin riser | 800mm (32") | 55,041 (121,340) |
| | | 900mm (36") | 55,549 (122,460) |
| 2pcs | Cabin elevating | 800mm (32") | 55,446 (122,240) |
| | | 900mm (36") | 55,954 (123,360) |
| 3pcs | Cabin riser | 800mm (32") | 55,115 (121,510) |
| | | 900mm (36") | 55,623 (122,630) |
| | Cabin elevating | 800mm (32") | 55,520 (122,480) |
| | | 900mm (36") | 56,028 (123,520) |

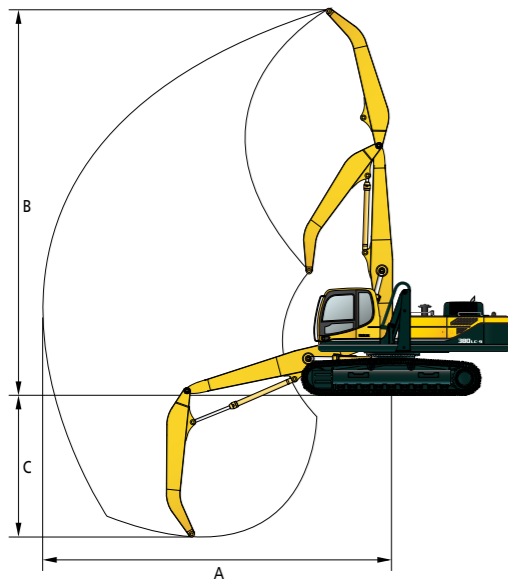
Dimensions & Working Range _ R380LC-9 MH (Cabin Elevating / 2Piece Front)

DIMENSIONS

(Unit : mm,ft-in)



WORKING RANGE



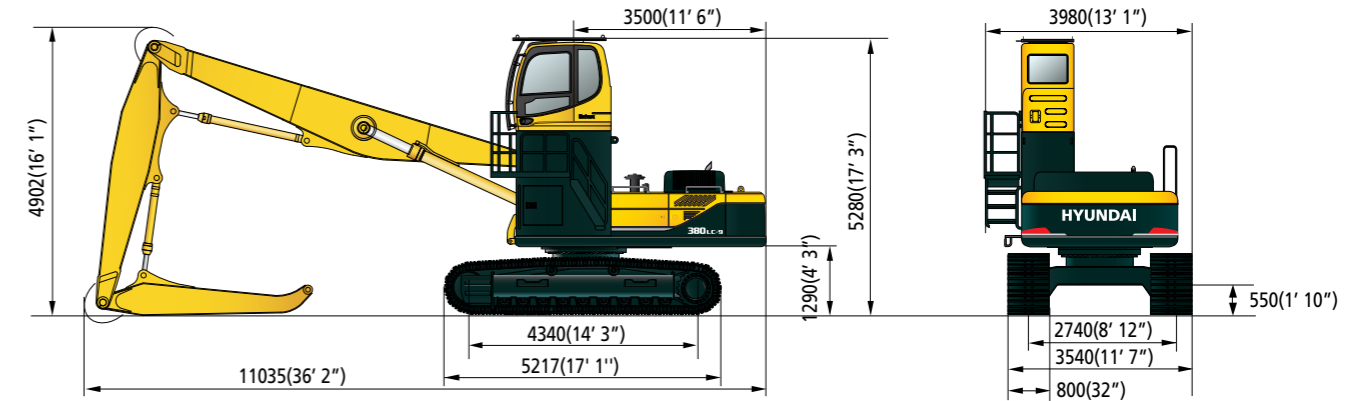
(Unit : mm,ft-in)

| | |
|-----------------------|-----------------|
| Boom Length | 8,600 (28' 3") |
| Arm Length | 6,050 (19' 10") |
| A. Max Working Reach | 14,560 (47' 9") |
| B. Max Working Height | 15,850 (52' 0") |
| C. Max Working Depth | 7,360 (24' 2") |

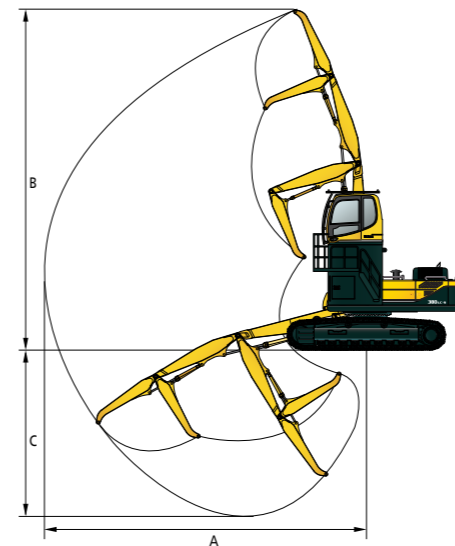
Dimensions & Working Range _ R380LC-9 MH (Cabin Riser / 3Piece Front)

DIMENSIONS

(Unit : mm,ft-in)



WORKING RANGE



(Unit : mm,ft-in)

| | |
|-----------------------|--|
| Boom Length | 6,600 (21' 8") |
| Arm Length | MID 4,300 (14' 1") / END 3,300 (10' 10") |
| A. Max Working Reach | 14,200 (46' 7") |
| B. Max Working Height | 15,700 (51' 6") |
| C. Max Working Depth | 7,870 (25' 10") |

Lifting Capacity

R380LC-9 MH 2PIECE FRONT

Boom : 8.6 m (28' 3") / Arm : 6.05 m (19' 10") / Shoe : 800mm (32") triple grouser

Rating over-front Rating over-side or 360 degree

| Load point height m (ft) | Load radius | | | | | | | | | | | | | | At max. reach | | | | |
|-----------------------------|---------------|--|---------------|--|---------------|--|---------------|--|---------------|--|----------------|--|----------------|--|----------------|--|----------|--------|--|
| | 3.0 m (10 ft) | | 4.5 m (15 ft) | | 6.0 m (20 ft) | | 7.5 m (25 ft) | | 9.0 m (30 ft) | | 10.5 m (35 ft) | | 12.0 m (40 ft) | | 13.5 m (45 ft) | | Capacity | Reach | |
| | | | | | | | | | | | | | | | | | m (ft) | m (ft) | |
| 13.5 m (45 ft) | kg | | | | | | | | | | | | | | | | | | |
| 12.0 m (40 ft) | kg | | | | | | | | | | | | | | | | | | |
| 10.5 m (35 ft) | kg | | | | | | | | | | | | | | | | | | |
| 9.0 m (30 ft) | kg | | | | | | | | | | | | | | | | | | |
| 7.5 m (25 ft) | kg | | | | | | | | | | | | | | | | | | |
| 6.0 m (20 ft) | kg | | | | | | | | | | | | | | | | | | |
| 4.5 m (15 ft) | kg | | | | | | | | | | | | | | | | | | |
| 3.0 m (10 ft) | kg | | | | | | | | | | | | | | | | | | |
| 1.5 m (5 ft) | kg | | | | | | | | | | | | | | | | | | |
| Ground | kg | | | | | | | | | | | | | | | | | | |
| Line | kg | | | | | | | | | | | | | | | | | | |
| -1.5 m (-5 ft) | kg | | | | | | | | | | | | | | | | | | |
| -3.0 m (-10 ft) | kg | | | | | | | | | | | | | | | | | | |
| -4.5 m (-15 ft) | kg | | | | | | | | | | | | | | | | | | |
| -6.0 m (-20 ft) | kg | | | | | | | | | | | | | | | | | | |
| -7.5 m (-25 ft) | kg | | | | | | | | | | | | | | | | | | |

Lifting Capacity

R380LC-9 MH 3PIECE FRONT

Boom : 6.60m (21' 8") / Middle Arm : 4.30m (14' 1") / End Arm : 3.30m (10' 10") / Shoe : 800mm (32") triple grouser

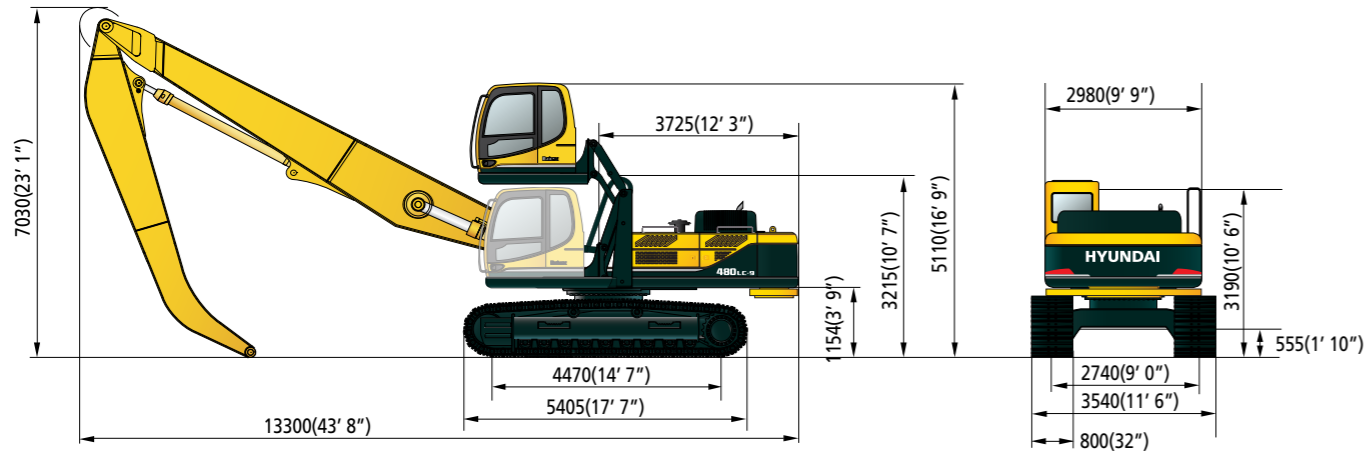
Rating over-front Rating over-side or 360 degree

| Load point height m (ft) | Load radius | | | | | | | | | | | | | | At max. reach | | | | |
|-----------------------------|---------------|--|---------------|--|---------------|--|---------------|--|---------------|--|----------------|--|----------------|--|----------------|--|----------|--------|--|
| | 3.0 m (10 ft) | | 4.5 m (15 ft) | | 6.0 m (20 ft) | | 7.5 m (25 ft) | | 9.0 m (30 ft) | | 10.5 m (35 ft) | | 12.0 m (40 ft) | | 13.5 m (45 ft) | | Capacity | Reach | |
| | | | | | | | | | | | | | | | | | m (ft) | m (ft) | |
| 13.5 m (45 ft) | kg | | | | | | | | | | | | | | | | | | |
| 12.0 m (40 ft) | kg | | | | | | | | | | | | | | | | | | |
| 10.5 m (35 ft) | kg | | | | | | | | | | | | | | | | | | |
| 9.0 m (30 ft) | kg | | | | | | | | | | | | | | | | | | |
| 7.5 m (25 ft) | kg | | | | | | | | | | | | | | | | | | |
| 6.0 m (20 ft) | kg | | | | | | | | | | | | | | | | | | |
| 4.5 m (15 ft) | kg | | | | | | | | | | | | | | | | | | |
| 3.0 m (10 ft) | kg | | | | | | | | | | | | | | | | | | |
| 1.5 m (5 ft) | kg | | | | | | | | | | | | | | | | | | |
| Ground | kg | | | | | | | | | | | | | | | | | | |
| Line | kg | | | | | | | | | | | | | | | | | | |
| -1.5 m (-5 ft) | kg | | | | | | | | | | | | | | | | | | |
| -3.0 m (-10 ft) | kg | | | | | | | | | | | | | | | | | | |
| -4.5 m (-15 ft) | kg | | | | | | | | | | | | | | | | | | |
| -6.0 m (-20 ft) | kg | | | | | | | | | | | | | | | | | | |
| -7.5 m (-25 ft) | kg | | | | | | | | | | | | | | | | | | |

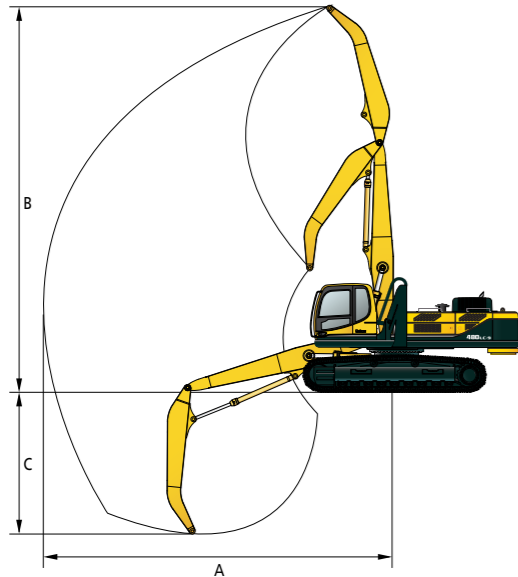
Dimensions & Working Range _ R480LC-9 MH (Cabin Elevating / 2Piece Front)

DIMENSIONS

(Unit : mm,ft-in)



WORKING RANGE



| | | (Unit : mm,ft-in) | |
|-----------------------|--|-------------------|-----------|
| Boom Length | | 10,000 | (32' 10") |
| Arm Length | | 7,100 | (23' 4") |
| A. Max Working Reach | | 16,755 | (55' 0") |
| B. Max Working Height | | 18,320 | (60' 1") |
| C. Max Working Depth | | 6,875 | (22' 7") |

Lifting Capacity

R480LC-9 MH 2PIECE FRONT

Boom : 10.0 m (32' 10") / Arm : 7.1 m (23' 4") SAE heaped / Shoe : 800mm(32") triple grouser

Rating over-front Rating over-side or 360 degree

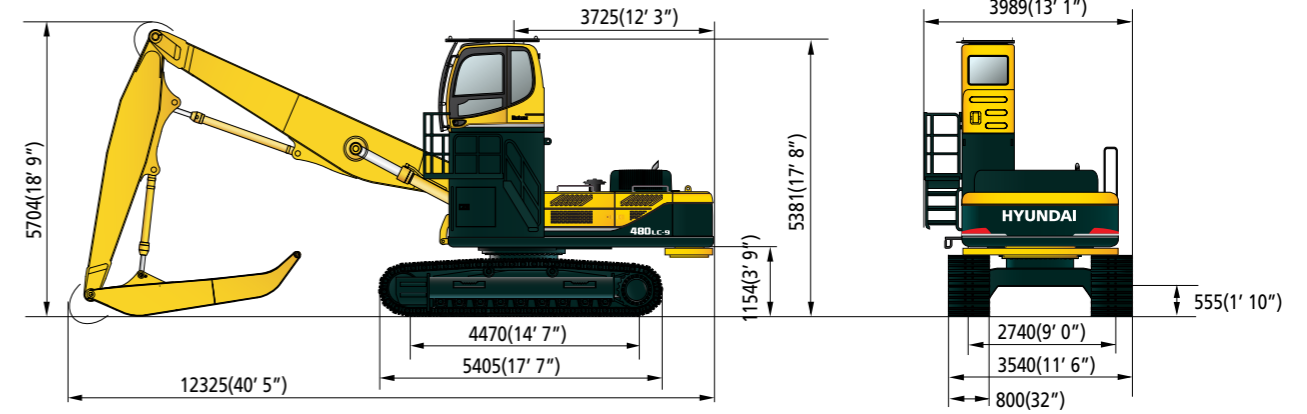
| Load point height m (ft) | Load radius | | | | | | | | | | | | | | At max. reach | | |
|-----------------------------|-------------------|--------------------------------|-------------------|--------------------------------|-------------------|--------------------------------|-------------------|--------------------------------|-------------------|--------------------------------|-------------------|--------------------------------|-------------------|--------------------------------|---------------|--------|--|
| | 3.0 m (9.8 ft) | | 5.0 m (16.4 ft) | | 7.0 m (23.0 ft) | | 9.0 m (29.5 ft) | | 11.0 m (36.1 ft) | | 13.0 m (42.7 ft) | | 15.0 m (49.2 ft) | | Capacity | Reach | |
| | Rating over-front | Rating over-side or 360 degree | Rating over-front | Rating over-side or 360 degree | Rating over-front | Rating over-side or 360 degree | Rating over-front | Rating over-side or 360 degree | Rating over-front | Rating over-side or 360 degree | Rating over-front | Rating over-side or 360 degree | Rating over-front | Rating over-side or 360 degree | m (ft) | m (ft) | |
| 15.0 m (49.2 ft) | | | | | | | | | | | | | | | | | |
| 13.5 m (44.3 ft) | | | | | | | | | | | | | | | | | |
| 12.0 m (39.4 ft) | | | | | | | | | | | | | | | | | |
| 10.5 m (34.4 ft) | | | | | | | | | | | | | | | | | |
| 9.0 m (29.5 ft) | | | | | | | | | | | | | | | | | |
| 6.0 m (19.7 ft) | | | | | | | | | | | | | | | | | |
| 3.0 m (9.8 ft) | | | | | | | | | | | | | | | | | |
| Ground Line | | | | | | | | | | | | | | | | | |
| -3.0 m (-9.8 ft) | | | | | | | | | | | | | | | | | |
| -4.5 m (-14.8 ft) | | | | | | | | | | | | | | | | | |

- Lifting capacity is based on SAE J1097, ISO 10567.
- Lifting capacity of the Robex Series does not exceed 75% of the tipping load with the machine on firm, level ground or 87% of full hydraulic capacity.
- The load point is a hook located on the back of the bucket.
- (*) indicates the load limited by hydraulic capacity.

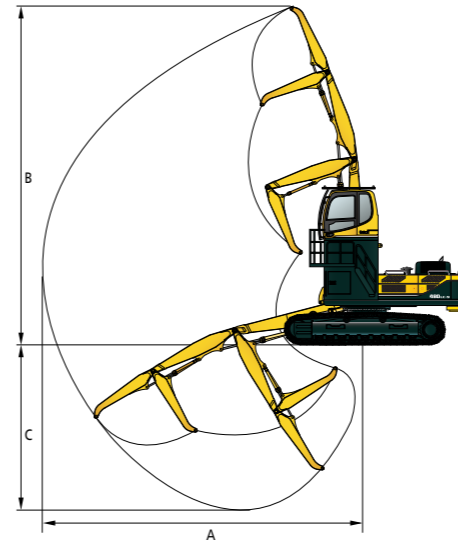
Dimensions & Working Range _ R480LC-9 MH (Cabin Riser / 3Piece Front)

DIMENSIONS

(Unit : mm,ft-in)



WORKING RANGE



| | | (Unit : mm,ft-in) | |
|-----------------------|--|---|----------|
| Boom Length | | 7,500 | (24' 7") |
| Arm Length | | MID 5,000 (16' 5") / END 4,000 (13' 1") | |
| A. Max Working Reach | | 15,970 | (52' 5") |
| B. Max Working Height | | 17,410 | (57' 1") |
| C. Max Working Depth | | 8,340 | (27' 4") |

Lifting Capacity

R480LC-9 MH 3PIECE FRONT

Boom : 7.5 m (24' 7") / Middle Arm : 5.00 m (16' 5") / End Arm : 4.00 m (13' 1") / Shoe : 800 mm (32") triple grouser

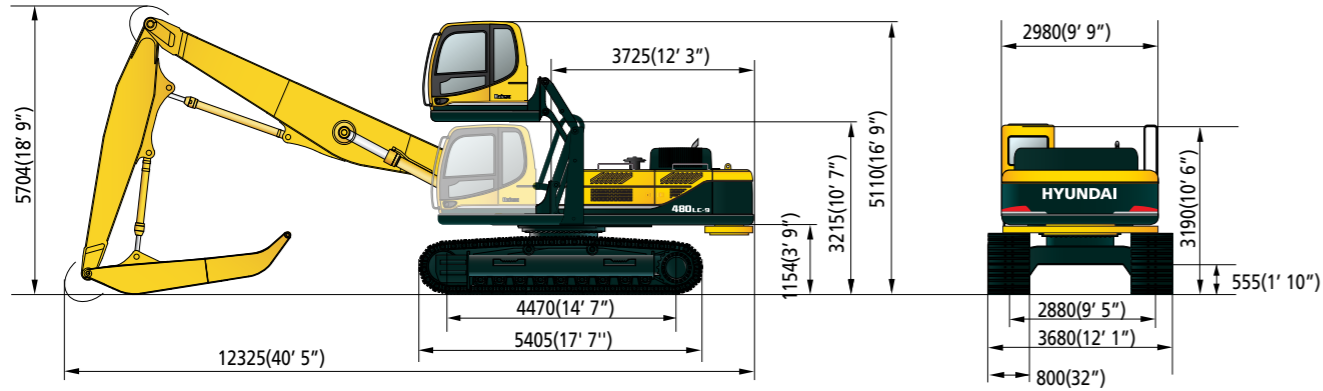
Rating over-front Rating over-side or 360 degree

| Load point height m (ft) | Load radius | | | | | | | | | | | | | | At max. reach | | | | | |
|-----------------------------|-------------------|--------------------------------|-------------------|--------------------------------|-------------------|--------------------------------|-------------------|--------------------------------|-------------------|--------------------------------|-------------------|--------------------------------|-------------------|--------------------------------|-------------------|--------------------------------|-------------------|--------------------------------|----------|--------|
| | 3.0 m (10 ft) | | 4.5 m (15 ft) | | 6.0 m (20 ft) | | 7.5 m (25 ft) | | 9.0 m (30 ft) | | 10.5 m (35 ft) | | 12.0 m (40 ft) | | 13.5 m (45 ft) | | 15.0 m (50 ft) | | Capacity | Reach |
| | Rating over-front | Rating over-side or 360 degree | Rating over-front | Rating over-side or 360 degree | Rating over-front | Rating over-side or 360 degree | Rating over-front | Rating over-side or 360 degree | Rating over-front | Rating over-side or 360 degree | Rating over-front | Rating over-side or 360 degree | Rating over-front | Rating over-side or 360 degree | Rating over-front | Rating over-side or 360 degree | Rating over-front | Rating over-side or 360 degree | m (ft) | m (ft) |
| 12.0m (39.2ft) | | | | | | | | | | | | | | | | | | | | |
| 10.5m (34.3ft) | | | | | | | | | | | | | | | | | | | | |
| 9.0m (29.4ft) | | | | | | | | | | | | | | | | | | | | |
| 7.5m (24.5ft) | | | | | | | | | | | | | | | | | | | | |
| 6.0m (19.6ft) | | | | | | | | | | | | | | | | | | | | |
| 4.5m (14.7ft) | | | | | | | | | | | | | | | | | | | | |
| 3.0m (9.8ft) | | | | | | | | | | | | | | | | | | | | |
| 1.5m (4.9ft) | | | | | | | | | | | | | | | | | | | | |
| Ground Line | | | | | | | | | | | | | | | | | | | | |
| -1.5m (-4.9ft) | | | | | | | | | | | | | | | | | | | | |
| -3.0m (-9.8ft) | | | | | | | | | | | | | | | | | | | | |
| -4.5m (-14.7ft) | | | | | | | | | | | | | | | | | | | | |
| -6.0m (-19.6ft) | | | | | | | | | | | | | | | | | | | | |
| -7.5m (-24.5ft) | | | | | | | | | | | | | | | | | | | | |
| -9.0m (-29.4ft) | | | | | | | | | | | | | | | | | | | | |

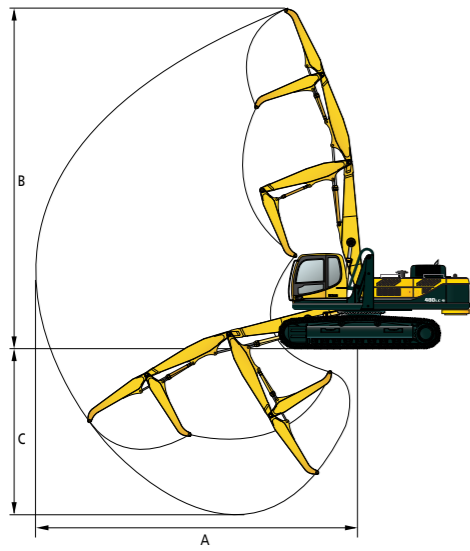
Dimensions & Working Range _ R480LC-9 MH (Cabin Elevating / 3Piece Front)

DIMENSIONS

(Unit : mm,ft.in)



WORKING RANGE



(Unit : mm,ft.in)

| | |
|-----------------------|---|
| Boom Length | 7,500 (24' 7") |
| Arm Length | MID 5,000 (16' 5") / END 4,000 (13' 1") |
| A. Max Working Reach | 15,970 (52' 5") |
| B. Max Working Height | 17,410 (57' 1") |
| C. Max Working Depth | 8,340 (27' 4") |

Lifting Capacity

R480LC-9 MH 3PIECE FRONT

Rating over-front Rating over-side or 360 degree

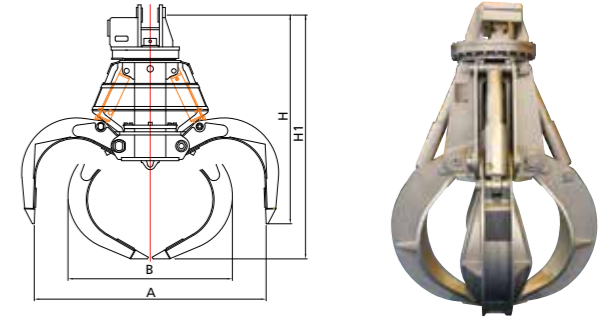
Boom : 7.5 m (24' 7") / Middle Arm : 5.00 m (16' 5") / End Arm : 4.00 m (13' 1") / Shoe : 800 mm (32") triple grouser

| Load point height m (ft) | Load radius | | | | | | | | | | | | | | At max. reach | | | | | | | |
|-----------------------------|---------------|--------|---------------|--------|---------------|--------|---------------|--------|---------------|--------|----------------|-------|----------------|-------|----------------|-------|----------------|-------|----------|--------|---------------|---------------|
| | 3.0 m (10 ft) | | 4.5 m (15 ft) | | 6.0 m (20 ft) | | 7.5 m (25 ft) | | 9.0 m (30 ft) | | 10.5 m (35 ft) | | 12.0 m (40 ft) | | 13.5 m (45 ft) | | 15.0 m (50 ft) | | Capacity | Reach | | |
| | | | | | | | | | | | | | | | | | | | | m (ft) | | |
| 12.0m (39.2ft) | kg | | | | | | | | | | | | | | | | | | *5218 | 5216 | 12.78 (41.73) | |
| 10.5m (34.3ft) | kg | | | | | | | | | | | | | | | | | | *11503 | 11499 | 13.82 (45.16) | |
| 9.0m (29.4ft) | kg | | | | | | | | | | | | | | | | | | *5122 | 4665 | 14.64 (47.83) | |
| 7.5m (24.5ft) | kg | | | | | | | | | | | | | | | | | | *11292 | 10286 | 15.26 (49.85) | |
| 6.0m (19.6ft) | kg | | | | | | | | | | | | | | | | | | *11219 | 9433 | 15.72 (51.34) | |
| 4.5m (14.7ft) | kg | | | | | | | | | | | | | | | | | | *5089 | 4279 | 16.02 (52.32) | |
| 3.0m (9.8ft) | kg | | | | | | | | | | | | | | | | | | *11219 | 9433 | 16.17 (52.82) | |
| 1.5m (4.9ft) | kg | | | | | | | | | | | | | | | | | | *11219 | 9433 | 16.18 (52.82) | |
| Ground Line | kg | | | | | | | | | | | | | | | | | | *11219 | 9433 | 16.05 (52.44) | |
| -1.5m (-4.9ft) | kg | *16846 | 16136 | 13757 | 11817 | 10944 | 9202 | 9041 | 7480 | 6654 | 5380 | 4752 | 5313 | 4247 | 4815 | 3830 | 4595 | 3647 | *10947 | *10947 | 15.78 (51.55) | |
| -3.0m (-9.8ft) | kg | *37139 | 35575 | 30329 | 26052 | 24128 | 20286 | 19931 | 16490 | 16911 | 13813 | 14669 | 11861 | 13037 | 10477 | 11713 | 9362 | 10615 | 8443 | 10130 | 8041 | 15.35 (50.14) |
| -4.5m (-14.7ft) | kg | *14631 | *14631 | 13780 | 11841 | 10980 | 9240 | 9071 | 7512 | 6715 | 6311 | 6717 | 5446 | 4955 | 4795 | 3536 | 4291 | 4965 | 3969 | 4765 | 3647 | 14.76 (48.21) |
| -6.0m (-19.6ft) | kg | *32256 | *32256 | 30379 | 26106 | 24208 | 20371 | 19998 | 16561 | 14969 | 12173 | 13278 | 10572 | 11808 | 9460 | 11668 | 9388 | 11668 | 9388 | 8443 | 8319 | 13.98 (45.67) |
| -7.5m (-24.5ft) | kg | *13455 | *13455 | *11560 | *11560 | *9823 | 9332 | *8287 | 7604 | *7767 | 6397 | 6790 | 5522 | 6023 | 4866 | 5436 | 4373 | 5292 | 4258 | 3563 | 3563 | 12.97 (42.38) |
| -9.0m (-29.4ft) | kg | *29664 | *29664 | *25485 | *25485 | *21656 | 20575 | *18270 | 16764 | *17124 | 14104 | 14969 | 12173 | 13278 | 10572 | 11808 | 9460 | 11668 | 9388 | 8443 | 8319 | 12.33 (40.29) |

Attachment Selection

ORANGE GRAPPLE

- * Pendulum Type
- * Rotating Options : Hydraulic Rotating Type, Free Rotating Type, Fixed Type available
- * Number of Tines : 4 / 5 / 6
- * Tines Options : Close Type, Semi-close Type, Open Type

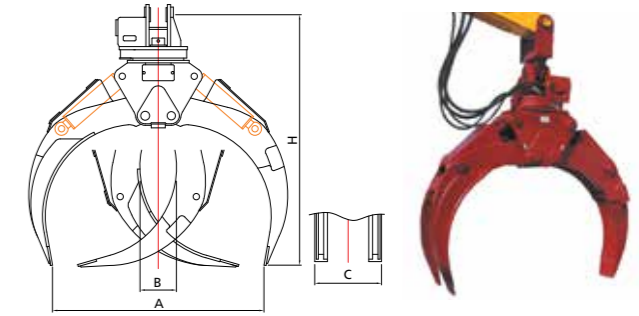


SPECIFICATION

| Description | Unit | HDSG800 | HDSG1000 | HDSG1500 |
|--------------------------|-----------------------------------|-------------------------|-------------------------|---------------------------|
| Operating Weight | kg (lb) | 1,200 (2650) | 1,400 (3090) | 2,040 (4500) |
| Capacity | m ³ (yd ³) | 0.7 (0.92) | 0.9 (1.18) | 1.4 (1.83) |
| A | mm (ft · in) | 1,820 (6' 0") | 2,000 (6' 7") | 2,400 (7' 10") |
| B | mm (ft · in) | 1,290 (4' 3") | 1,505 (4' 11") | 1,770 (5' 10") |
| C | mm (ft · in) | - | - | - |
| H | mm (ft · in) | 1,630 (5' 4") | 1,800 (5' 11") | 2,120 (6' 11") |
| H1 | mm (ft · in) | 1,905 (6' 3") | 2,048 (6' 9") | 2,500 (8' 2") |
| Standard Tines NO. | - | 5 | 5 | 5 |
| Operating Pressure | kg / psi | 280 / 3,983 | 280 / 3,983 | 280 / 3,983 |
| Oil Flow Rate | LPM / GPM | 200 ~ 250 / 52.8 ~ 66.1 | 250 ~ 300 / 66.1 ~ 79.3 | 290 ~ 320 / 76.7 ~ 84.6 |
| Rotating Hydraulic Motor | Motor Setting Pressure | kg / psi | 160 / 2,276 | 160 / 2,276 |
| | Motor Oil Flow Rate | LPM / GPM | ~ 40 / ~ 10.5 | ~ 40 / ~ 10.5 |
| | Revolving Speed | RPM | 16 ~ 18 | 16 ~ 18 |
| Application Equipment | | R210W-9 MH | R290LC-9 MH | R380LC-9 MH / R480LC-9 MH |

WOOD GRAPPLE

- * Pendulum Type
- * Rotating Type

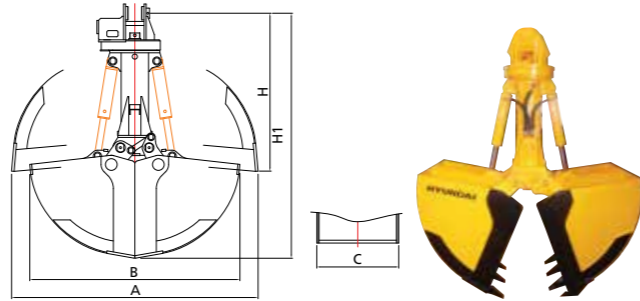


SPECIFICATION

| Description | Unit | HDWP800 | HDWP1000 | HDWP1001 |
|--------------------------|-----------------------------------|-------------------------|-------------------------|---------------------------|
| Operating Weight | kg (lb) | 1,000 (2200) | 1,200 (2650) | 2,050 (4520) |
| Capacity | m ³ (yd ³) | 0.6 (0.78) | 0.8 (1.05) | 1.9 (2.49) |
| A | mm (ft · in) | 1,520 (4' 12") | 1,660 (5' 5") | 3,500 (11' 6") |
| B | mm (ft · in) | 304 (0' 12") | 300 (0' 12") | 478 (1' 7") |
| C | mm (ft · in) | 521 (1' 9") | 521 (1' 9") | 830 (2' 9") |
| H | mm (ft · in) | 1,724 (5' 8") | 1,925 (6' 4") | 2,260 (7' 5") |
| Operating Pressure | kg / psi | 280 / 3,983 | 280 / 3,983 | 280 / 3,983 |
| Oil Flow Rate | LPM / GPM | 200 ~ 250 / 52.8 ~ 66.1 | 250 ~ 300 / 66.1 ~ 79.3 | 250 ~ 300 / 66.1 ~ 79.3 |
| Rotating Hydraulic Motor | Motor Setting Pressure | kg / psi | 120 / 1,707 | 120 / 1,707 |
| | Motor Oil Flow Rate | LPM / GPM | ~ 30 / ~ 7.9 | ~ 30 / ~ 7.9 |
| | Revolving Speed | RPM | 16 ~ 18 | 16 ~ 18 |
| Application Equipment | | R210W-9 MH | R290LC-9 MH | R380LC-9 MH / R480LC-9 MH |

CLAMSHELL BUCKET

- * Pendulum Type
- * Rotating Options : Hydraulic Rotating Type, Free Rotating Type, Fixed Type available
- * Teeth can be installed as Option. Standard Clamshell has no teeth.

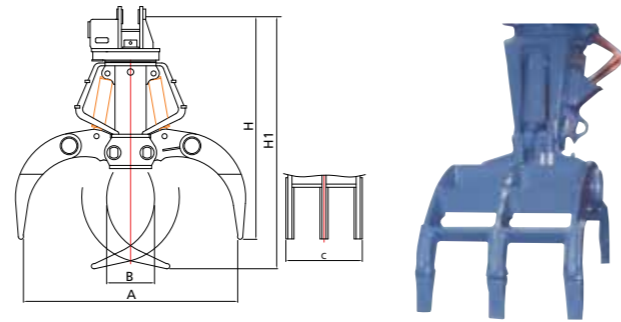


SPECIFICATION

| Description | Unit | HDCB800 | HDCB1000 | HDCB1500 |
|--------------------------|-----------------------------------|-------------------------|-------------------------|---------------------------|
| Operating Weight | kg (lb) | 980 (2160) | 1,100 (2430) | 1,350 (2980) |
| Capacity | m ³ (yd ³) | 0.7 (0.92) | 1.0 (1.31) | 1.5 (1.96) |
| A | mm (ft · in) | 2,000 (6' 7") | 2,128 (6' 12") | 2,128 (6' 12") |
| B | mm (ft · in) | 1,715 (5' 8") | 1,716 (5' 8") | 1,716 (5' 8") |
| C | mm (ft · in) | 800 (2' 7") | 1,000 (3' 3") | 1,500 (4' 11") |
| H | mm (ft · in) | 1,400 (4' 7") | 1,550 (5' 1") | 1,550 (5' 1") |
| H1 | mm (ft · in) | 2,094 (6' 10") | 2,140 (7' 0") | 2,140 (7' 0") |
| Operating Pressure | kg / psi | 280 / 3,983 | 280 / 3,983 | 280 / 3,983 |
| Oil Flow Rate | LPM / GPM | 200 ~ 250 / 52.8 ~ 66.1 | 250 ~ 300 / 66.1 ~ 79.3 | 250 ~ 300 / 66.1 ~ 79.3 |
| Rotating Hydraulic Motor | Motor Setting Pressure | kg / psi | 120 / 1,707 | 120 / 1,707 |
| | Motor Oil Flow Rate | LPM / GPM | ~ 30 / ~ 7.9 | ~ 30 / ~ 7.9 |
| | Revolving Speed | RPM | 16 ~ 18 | 16 ~ 18 |
| Application Equipment | | R210W-9 MH | R290LC-9 MH | R380LC-9 MH / R480LC-9 MH |

BEAM GRAPPLE

- * Pendulum Type
- * Rotating Options : Hydraulic Rotating Type, Fixed Type available



SPECIFICATION

| Description | Unit | HDBG800 | HDBG1000 |
|--------------------------|-----------------------------------|-------------------------|-------------------------|
| Operating Weight | kg (lb) | 960 (2120) | 1,200 (2650) |
| Capacity | m ³ (yd ³) | - | - |
| A | mm (ft · in) | 1,830 (6' 0") | 2,030 (6' 8") |
| B | mm (ft · in) | 530 (1' 9") | 640 (2' 1") |
| C | mm (ft · in) | 670 (2' 2") | 790 (2' 7") |
| H | mm (ft · in) | 1,840 (6' 0") | 2,035 (6' 8") |
| H1 | mm (ft · in) | 2,120 (6' 11") | 2,305 (7' 7") |
| Operating Pressure | kg / psi | 280 / 3,983 | 280 / 3,983 |
| Oil Flow Rate | LPM / GPM | 200 ~ 250 / 52.8 ~ 66.1 | 250 ~ 300 / 66.1 ~ 79.3 |
| Rotating Hydraulic Motor | Motor Setting Pressure | kg / psi | 120 / 1,707 |
| | Motor Oil Flow Rate | LPM / GPM | ~ 30 / ~ 7.9 |
| | Revolving Speed | RPM | 16 ~ 18 |
| Application Equipment | | R210W-9 MH | R290LC-9 MH |

STANDARD & OPTIONAL EQUIPMENT

STANDARD EQUIPMENT

R210W-9 MH

- ISO Standard cabin
 - All-weather steel cab with 360° visibility
 - Safety glass windows
 - Rise-up type windshield wiper
 - Sliding fold-in front window
 - Sliding side window(LH)
 - Sun visor
 - Lockable door
 - Hot & cool box
 - Storage compartment & Ashtray
 - Cabin roof-cover transparent
 - Radio & USB Player
 - 12 volt power outlet (24V DC to 12V DC converter)
- Computer aided power optimization (New CAPO) system
 - 3-power mode, 2-work mode, user mode
 - Auto deceleration & one-touch deceleration system
 - Auto warm-up system
 - Auto overheat prevention system
- Automatic climate control
 - Air conditioner & heater (FATC)
 - Defroster
- Self-diagnostics system
 - Starting Aid (air grid heater) for cold weather
- Centralized monitoring
 - LCD display
 - Engine speed or Trip meter/Accel.
 - Clock
 - Gauges
 - Fuel level gauge
 - Engine coolant temperature gauge
 - Hyd. oil temperature gauge
 - Warnings
 - Check Engine
 - Communication error
 - Low battery
 - Air cleaner clogging
 - Indicators
 - Max power
 - Low speed/High speed
 - Fuel warmer
 - Auto idle
- Door and cab locks, one key
- Four outside rearview mirrors
- Air suspension seat with heater
- Console height adjust system
- Pilot-operated slidable joystick
- Two front working lights
- Electric horn
- Batteries (2 x 12V x 100 AH)
- Battery master switch
- Removable clean-out dust net for cooler
- Automatic swing brake
- Removable reservoir tank
- Fuel pre-filter with single warmer
- Boom holding system
- Arm holding system
- Accumulator for lowering work equipment
- Electric Transducer
- Tires-dual (10.00-20-Solid)
- Travel alarm
- Boom
 - 6.5m, 21' 4"
- Arm
 - 4.5m, 14' 9"
- Undercarriage
 - Front and rear outrigger
 - Manual cabin lowering device

OPTIONAL EQUIPMENT

R210W-9 MH

- Fuel filler pump (50 L/min)
- Beacon lamp
- Cabin FOPS/FOG (ISO/DIS 10262 Level II)
 - FOPS (Falling Object Protective Structure)
 - FOG (Falling Object Guard)
- Cabin roof-steel cover
- Cabin front guard-wire net
- Cabin lights
- Cabin front window rain guard
- Option
 - Boom safety Lock Installed
 - Arm safety Lock Installed
- Tool kit
- Rearview camera
- Seat
 - Mechanical suspension
 - Mechanical suspension seat with heater
 - Air suspension seat
- Tires - dual (10.00 - 20 dual)
- Fenders (Mudguards)
- Hi-mate (Remote Management System)
- Fuel pre-filter with dual warmer

STANDARD & OPTIONAL EQUIPMENT

STANDARD EQUIPMENT

R290LC-9MH / 380LC-9MH / 480LC-9MH

- ISO Standard cabin
- All-weather steel cab with 360° visibility
- Safety glass windows
- Rise-up type windshield wiper
- Sliding side window(LH)
- Lockable door
- Hot & cool box
- Storage compartment & Ashtray
- Transparent cabin roof-cover
- Radio / USB Player
- 12 volt power outlet (24V DC to 12V DC converter)
- Handsfree mobile phone system with USB
- Sun visor
- Computer aided power optimization (New CAPO) system
- 3-power mode, 2-work mode, User mode
- Auto deceleration & one-touch deceleration system
- Auto warm-up system
- Auto overheat prevention system
- Automatic climate control
- Air conditioner & heater (FATC)
- Defroster
- Self-diagnostics system
- Starting Aid (air grid heater) for cold weather
- Centralized monitoring
- LCD display
- Engine speed or Trip meter/Accel.
- Clock
- Gauges
- Fuel level gauge
- Engine coolant temperature gauge
- Hyd. oil temperature gauge
- Warnings
- Check Engine
- Communication error
- Low battery
- Air cleaner clogging
- Indicators
- Max power
- Low speed/High speed
- Fuel warmer
- Auto idle
- Door and cab locks, one key
- Three outside rearview mirrors
- Mechanical suspension seat with heater
- Pilot-operated slidable joystick
- Console box height adjust system
- Four front working lights
- Electric horn
- Batteries (2 x 12V x 160 AH)
- Battery master switch
- Removable clean-out dust net for oil cooler
- Automatic swing brake
- Removable reservoir tank
- Fuel pre-filter with single warmer
- Boom holding system
- Arm holding system
- Track shoes (800mm, 32")
- Track rail guard
- Accumulator for lowering work equipment
- Electric transducer
- Lower frame under cover (Normal)

OPTIONAL EQUIPMENT

R290LC-9MH / 380LC-9MH / 480LC-9MH

- Fuel filler pump (50 L/min)
- Beacon lamp
- Elevating cabin
- Cabin FOPS/FOG (ISO/DIS 10262 Level II)
- FOPS (Falling Object Protective Structure)
- FOG (Falling Object Guard)
- Cabin guard front
- Wire net
- Fine net
- Cabin roof-steel cover
- Cabin front guard-wire net
- Cabin lights
- Cabin front window rain guard
- Lower frame under cover (Additional)
- Tool kit
- Rearview camera
- Seat
- Adjustable air suspension seat
- Adjustable air suspension seat with heater
- Mechanical suspension seat
- Hi-mate (Remote Management System)
- Air compressor
- Track shoes
- Triple grousers shoe (900 mm, 36")
- Full track rail guard
- Fuel pre-filter with dual warmer

R380LC-9MH

- 3 piece front
- 6.6 m (21' 8") boom, 4.3 m (14' 1") mid arm, 3.3 m (10' 10") end arm

R480LC-9MH

- 3 piece front
- 7.5 m, (24' 7") boom, 5.0 (16' 5") mid arm, 4.0 m, (13' 1") end arm

